

Sea Ray - 515 Sundancer 2007

325 000 EUR (Tax: Paid)

Athens, GR



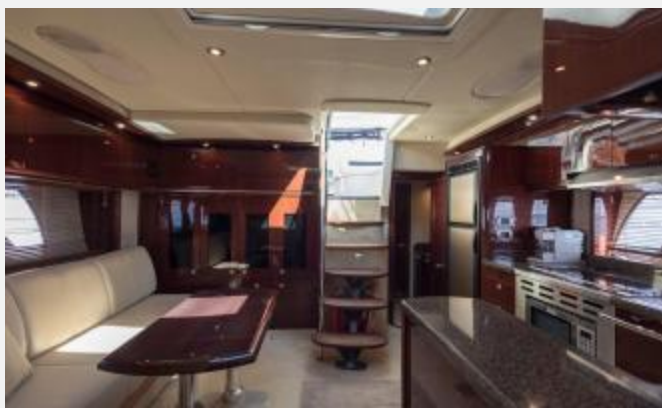
Overview

Manufacturer:	Sea Ray	Engines:	2 x CUMMINS 670 horsepower
Model:	515 Sundancer	Engine Hours:	600
Type:	Express Cruiser	Year:	2007
LOA:	15.50 m / 50.85 ft	Price:	325 000 EUR

Gallery









Description

Specifications:

Builder

Manufacturer: **Sea Ray**
Model: **515 Sundancer**
Year: **2007**
Hull Material: **Fiberglass**
Type: **Express Cruiser**

Accommodations

Cabins: **2**
WC: **2**

Dimensions

LOA: **15.50 m / 50.85 ft**
Beam: **4.47 m / 14.67 ft**
Draft: **1.17 m / 3.84 ft**

Speed

Cruising: **25 kn**
Maximum: **29 kn**

Engines

Manufacturer: **CUMMINS**
Model: **CMD 670 QSM11 T2 DTS**
Year: **2007**
Power: **2 x 670|horsepower**
Hours: **600**
Type of Drive: **Direct**
Type of Fuel: **diesel**

Tank Capacities

Total Fresh Water Tanks: **410|liter**
Total Fuel Tanks: **1520|liter**

Tax Code

Tax / VAT: **Paid**

Other Details:

Additional Information

Blue hull Two cabins two bathrooms

Hard top

Dark cherry glossy wood interior

2 Raymarine Radar GPS Plotter

Raymarine Automatic Pilot

17,5kw Kohler generator

Reverse cycle aircondition

Hydraulic rear platform

Hydraulic engine room opening

OpacMare Hydraulic passerele

Internal frifge

External fridge

BBQ

Watermaker

Teak deck in cockpit

Bow cushions

Aft tend

Disclaimer

The Company offers the details of this vessel in good faith but cannot guarantee or warrant the accuracy of this information nor warrant the condition of the vessel. A buyer should instruct his agents, or his surveyors, to investigate such details as the buyer desires validated. This vessel is offered subject to prior sale, price change, or withdrawal without notice.

Contact

For more information about the Sea Ray - 515 Sundancer 2007, contact the team.

Name: Octana Yacht Services P.C

Phone: +30 6970615856

Email: mark@octana.gr