

Fountaine Pajot - Queensland 55 2010

800 000 EUR

???????, GR



Overview

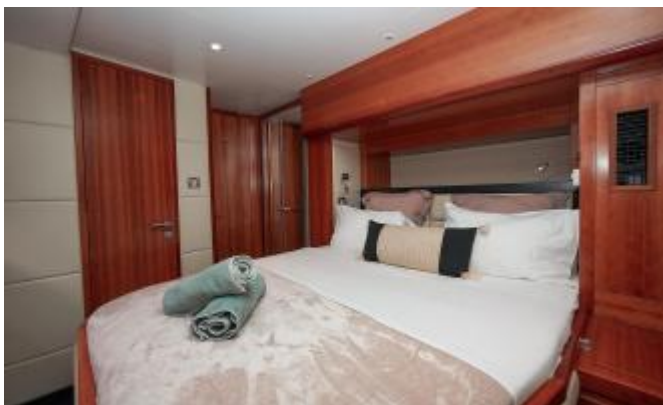
Manufacturer:	Fountaine Pajot	Engines:	2 x Volvo Penta 660 horsepower
Model:	Queensland 55	Engine Hours:	2500
Type:	Power Catamarans, Flybridge	Year:	2010
LOA:	17.10 m 56.10 ft	Price:	800 000 EUR

Gallery









Description

Fountaine Pajot Queensland 55 2010 This Queensland 55 is an exceptionally well-maintained example of Fountaine Pajot's flagship power catamaran, offering long-range cruising capability combined with the comfort, space, and functionality of a true motor yacht. She is currently presented in excellent overall condition following recent upgrades and maintenance. The layout includes four generously sized guest cabins, all with en-suite bathrooms. Crew accommodation is provided via a single cabin with one berth, integrated into the dedicated laundry room, accessible from both the forward guest cabin and an exterior hatch. The main saloon is bright and airy, featuring panoramic windows, a comfortable lounge area, and a fully equipped galley. The flybridge includes helm controls, a wet bar, and spacious lounging and sunbathing areas, ideal for entertaining or extended cruising. Recent Works & Features: Complete engine servicing carried out New anodes fitted and fresh antifouling coating applied Exterior teak decks polished and restored Comprehensive servicing of air conditioning units, generator, and pumps Brand new exterior cockpit cushions Upgraded high-quality sound system New autopilot system Full set of new batteries Available for inspection by appointment. Should you require any additional information, please do not hesitate to contact us.

Specifications:

Builder

Manufacturer:	Fountaine Pajot	Accommodations
Model:	Queensland 55	Cabins: 5
Year:	2010	WC: 5
Hull Material:	Fiberglass	
Type:	Power Catamarans, Flybridge	

Dimensions

LOA: **17.10 m 56.10 ft** **Speed**
Beam: **7.80 m 25.59 ft**
Draft:

Engines

Manufacturer:	Volvo Penta	Tank Capacities
Model:	D11A-C MP	
Year:	2010	Total Fresh Water Tanks: 1000 liter
Power:	2 x 660 horsepower	Total Fuel Tanks: 4200 liter
Hours:	2500	
Type of Fuel:	diesel	

Other Details:

- **Electrical Equipment**
 - Victron Energy Multiplus Battery Charger/Inverter
 - Mastervolt Battery Charger
 - Cummins Onan Generator 11Kw
 - Webasto Air Conditioning System
 - 4 x Solar Panels 400W
 - 8 x Service Batteries 12V 120Ah
 - 4 x Engine Batteries
 - 1 x Generator Battery
 - Emergency Battery 12V 50Ah
 - Engine Starter Battery 24V
 - WaterMaker 240 L/h
 - Sigma Marine Water Heater
 - Shore Power Inlet

- **Navigation & Communication Equipment**

Wheelhouse

- Furuno NavNet GPS/Plotter
- Furuno NavNet Autopilot
- Volvo Penta Display
- Furuno FB-8000 Satellite Phone
- Max Power Bow Thruster
- Camera
- Searchlight
- Icom VHF
- Compass

Flybridge

- Raymarine GPS/Plotter
- Furuno Navpilot Autopilot
- Max Power Bow Thruster
- Simrad Depthsounder
- Compass

- **Domestic Equipment**

Living Room

- U-Shape Saloon Sofa
- L-Shape Saloon Sofa
- Coffee Table
- Dining Table

Galley

- Corian Countertop
- 2 x Stainless Steel Sink
- Smeg Gas Stove with 4 Burner Hob
- Nardi Oven
- Microwave
- Extractor Hood
- Fridge & Freezer
- Dishwasher
- Ice Maker

Audio & Visual Equipment

- New Sound System (Bluetooth Connection/Radio/MP3)
- Interior & Exterior Speakers
- TV in Lounge, Collapsible (Electric Lift)

Laundry Room

- Miele Novotronic W972 Washing Machine
- Miele Novotronic T250C Dryer

- **Accommodation**

4 x Guest Cabins & 4 x Heads

Forward Starboard Cabin

- King-Size Bed
- Wardrobe
- TV
- En-Suite Facilities

Forward Port Cabin

- King-Size Bed
- Wardrobe
- TV
- En-Suite Facilities

Aft Starboard Cabin

- 2 x Single Beds
- Wardrobe
- TV
- En-Suite Facilities
- Access to Laundry Room

Aft Port Cabin

- 2 x Single Beds
- Wardrobe
- TV
- En-Suite Facilities

1 x Crew Cabin

- Forward starboard crew cabin with a single bed.
- Head & shower located in the forward portside storage room.

- **Deck Equipment**

Flybridge

- Upper Helm Station
- Wet Bar
- U-Shape Sofa
- L-Shape Sofa
- Teak Coffee Table

- Teak Dining Table
- Bimini Top (2025)
- Opacmare Crane

Aft Deck

- Sunbathing Cushions
- Teak Dining Table
- 4x Armchairs
- 2 x Isotherm Fridges
- Teak Cockpit
- Sunbathing Cushions
- LED Lighting
- Hydraulic Gangway
- Cockpit Cover
- 2 x Electric Lewmar Winches
- Bathing Platform
- Swimming Ladder

Forward Deck

- Electric Windlass
- Deck Washing
- Sunbathing Cushions
- Coffee Table

• Disclaimer

The Company offers the details of this vessel in good faith but cannot guarantee or warrant the accuracy of this information nor warrant the condition of the vessel. A buyer should instruct his agents, or his surveyors, to investigate such details as the buyer desires validated. This vessel is offered subject to prior sale, price change, or withdrawal without notice.

Contact

For more information about the Fountaine Pajot - Queensland 55 2010, contact the team.

Name: Octana Yacht Services P.C

Phone: +30 6970615856

Email: mark@octana.gr